



WAKE COUNTY
PUBLIC SCHOOL SYSTEM



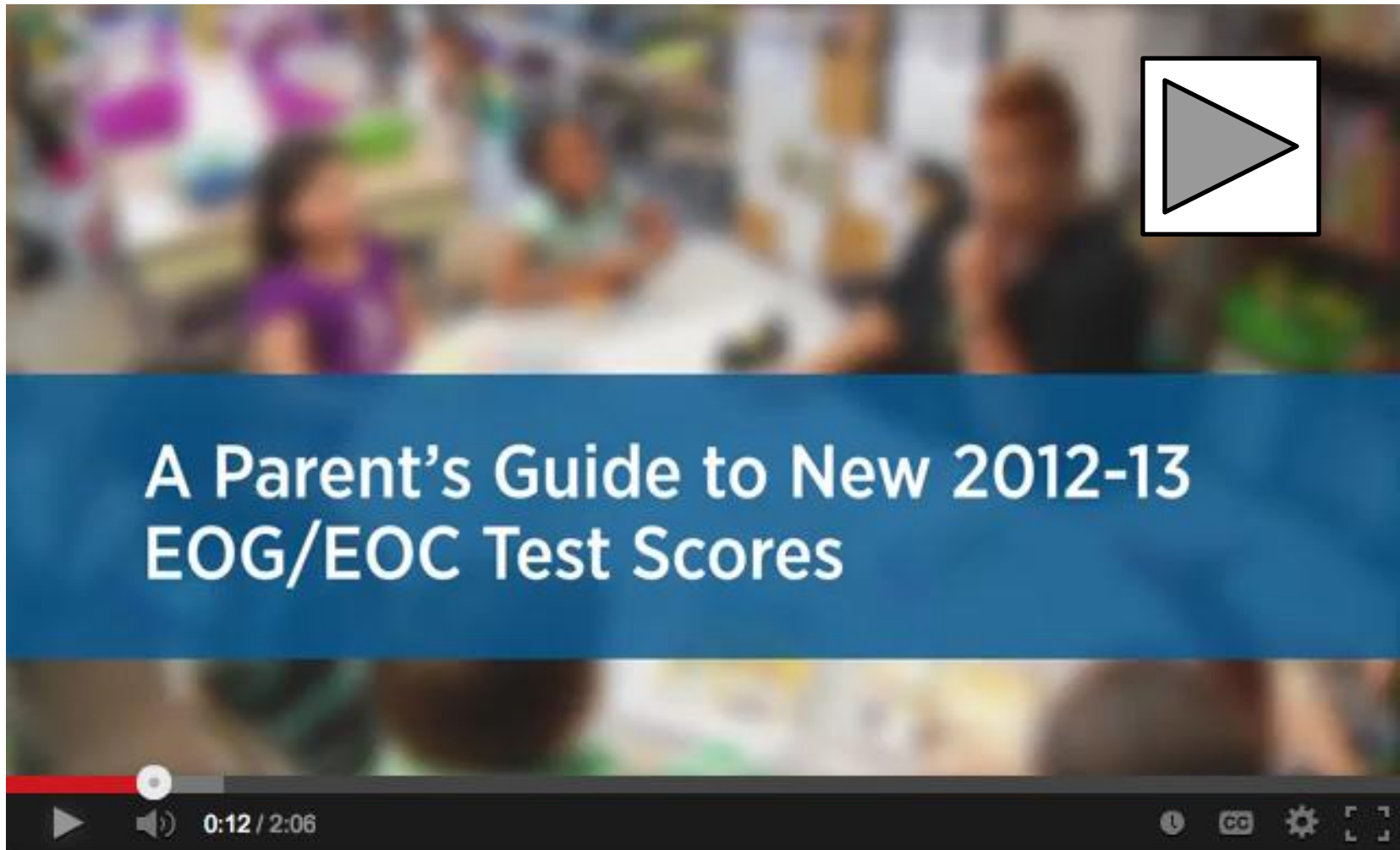
Weatherstone
ELEMENTARY SCHOOL

A WAKE STEM SCHOOL

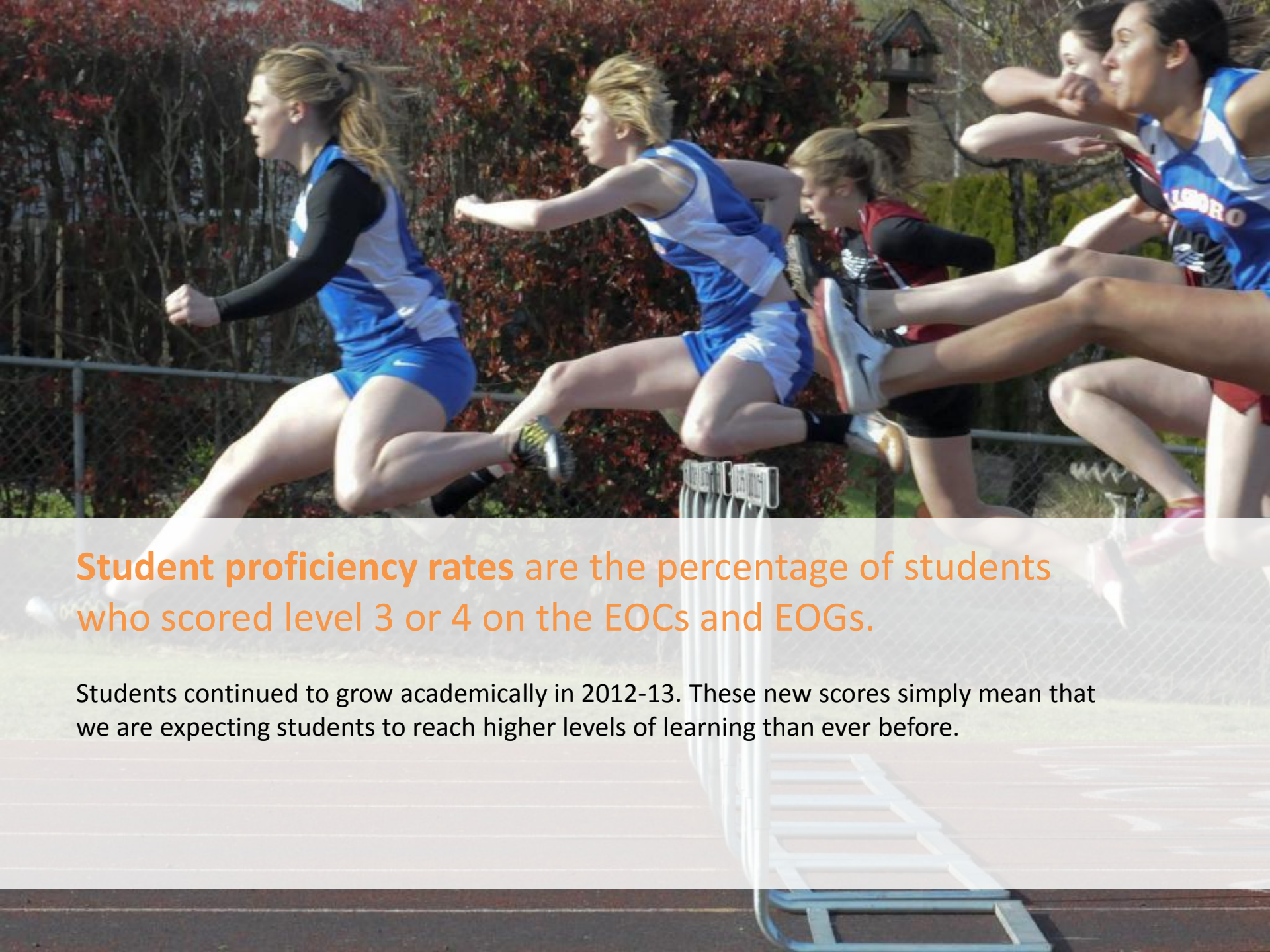


PARENT PRESENTATION
**Common Core/
Essential Standards
Assessment Results**

Video



Watch here: <http://www.youtube.com/watch?v=b7d5QK3lpeI&feature=youtu.be>

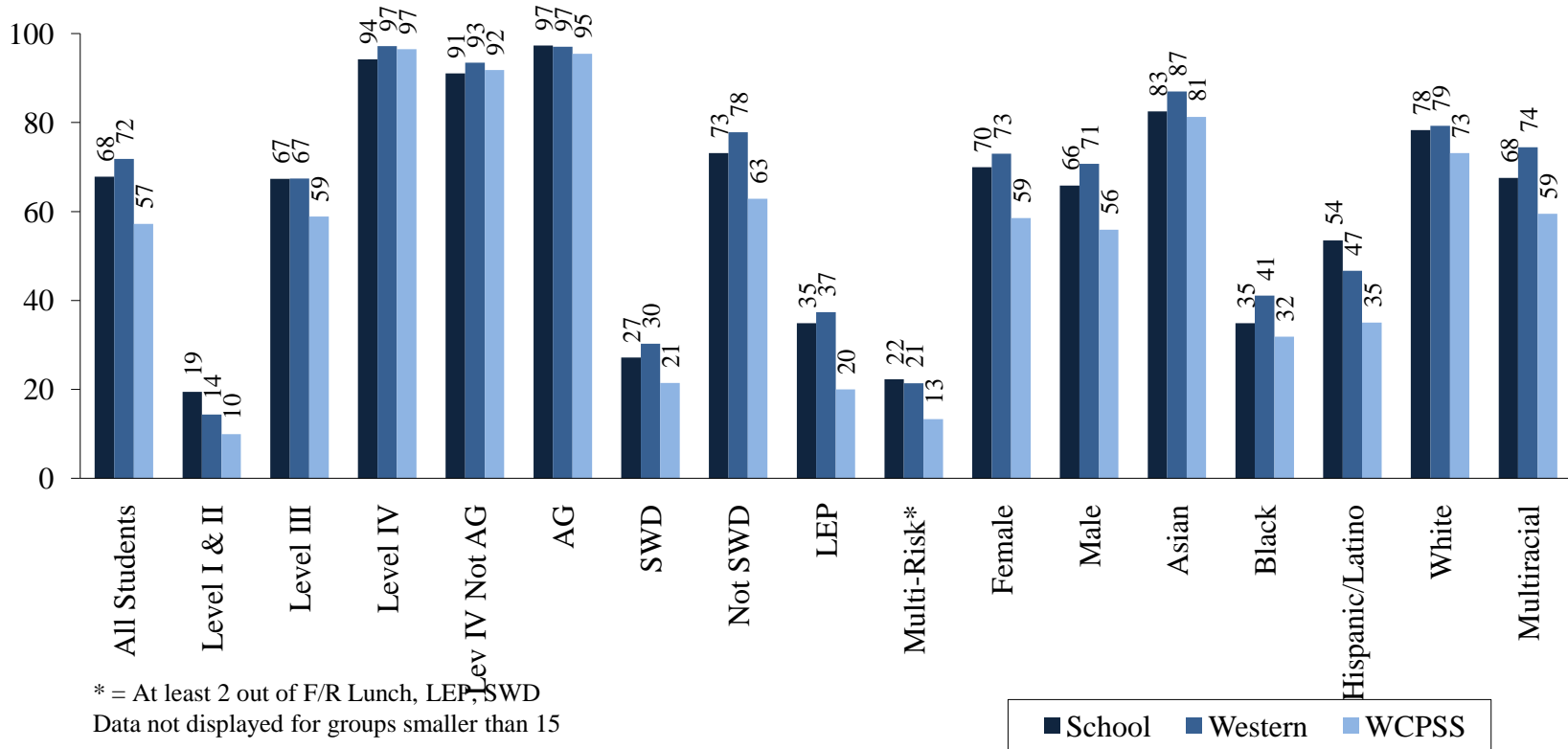


Student proficiency rates are the percentage of students who scored level 3 or 4 on the EOCs and EOGs.

Students continued to grow academically in 2012-13. These new scores simply mean that we are expecting students to reach higher levels of learning than ever before.

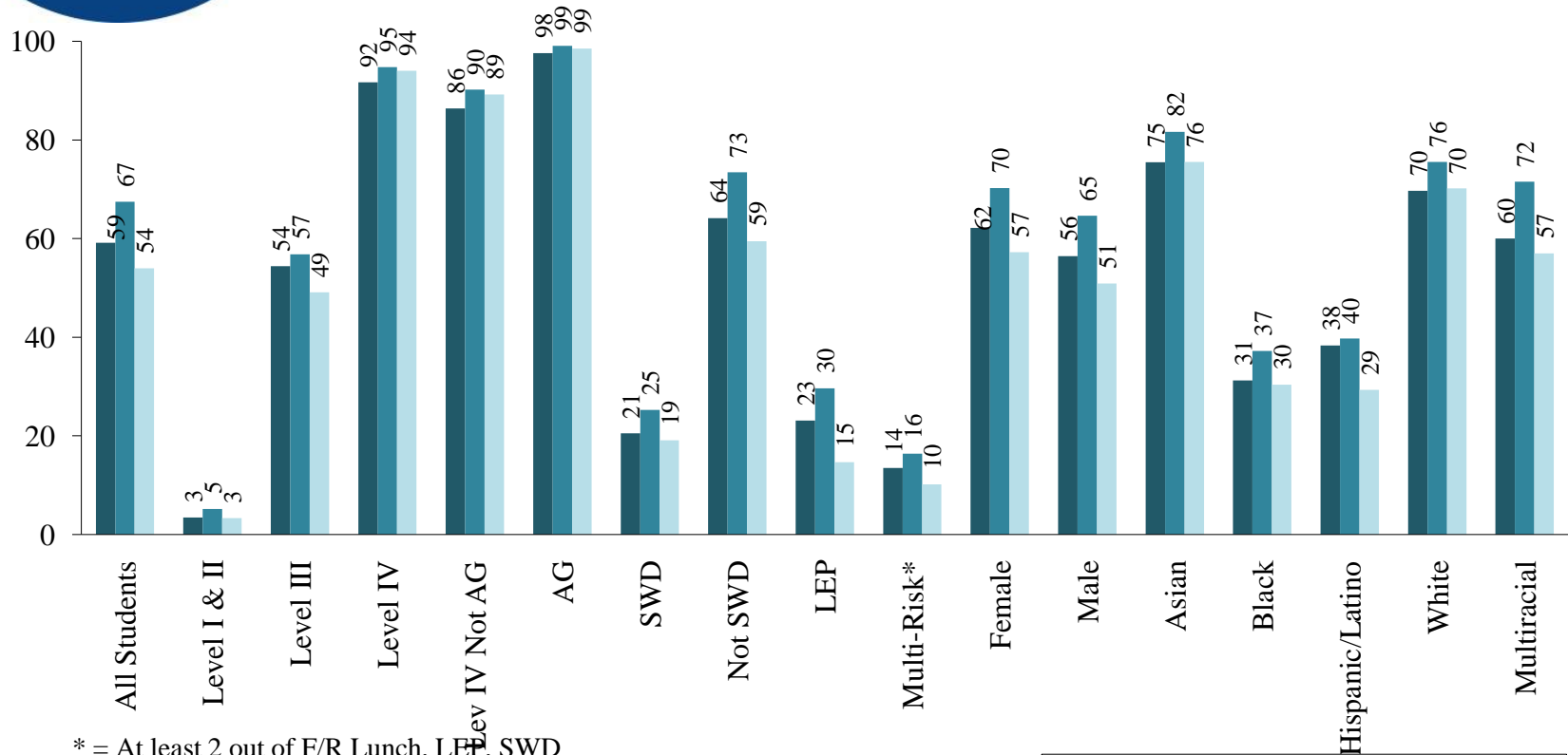
Student proficiency rates

Weatherstone Elementary Performance Composite by Subgroup All EOG Tests and Alternative Assessments Grades 3-5



Student proficiency rates

Weatherstone Elementary Percent Proficient by Subgroup Grades 3-5 Reading (alternate assessments included)

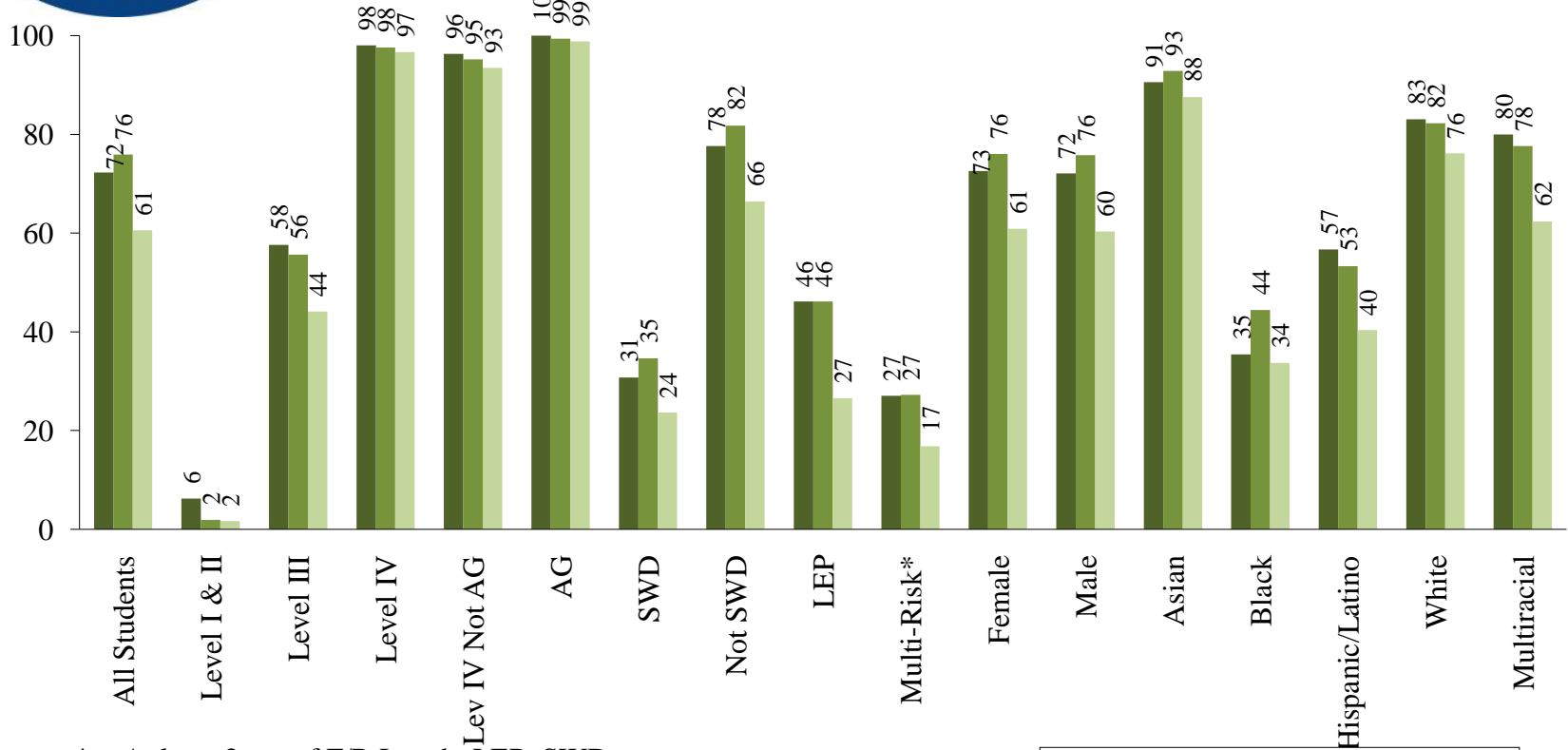


* = At least 2 out of F/R Lunch, LEP, SWD
Data not displayed for groups smaller than 15 students



Student proficiency rates

Weatherstone Elementary Percent Proficient by Subgroup Grades 3-5 Math (alternate assessments included)

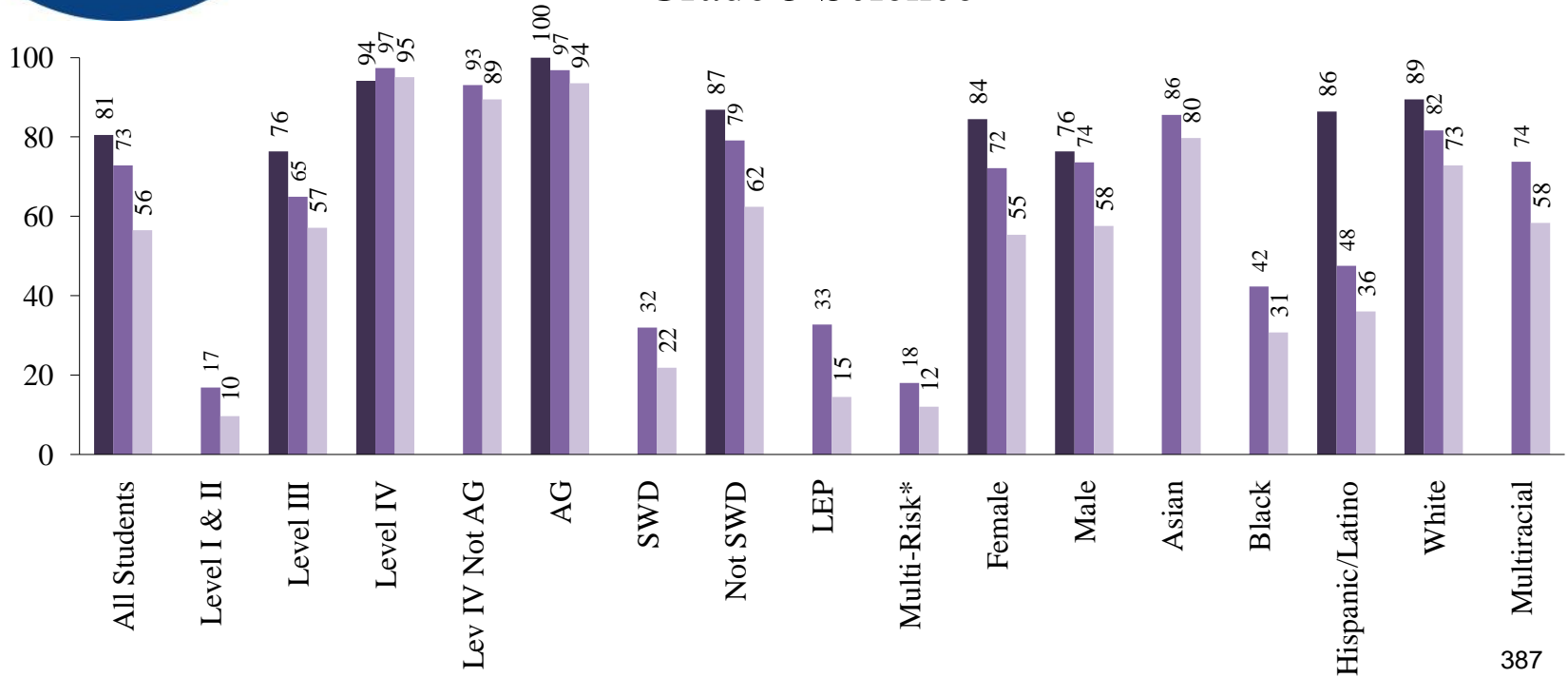


* = At least 2 out of F/R Lunch, LEP, SWD

■ School ■ Western ■ WCPSS

Student proficiency rates

Weatherstone Elementary Percent Proficient by Subgroup Grade 5 Science



N-Counts for 2012-13. Data not displayed for groups smaller than 15 students





Student growth rates reflect the progress students made during the course of the school year.

Academic growth rates

- Our EVAAS growth rate for 2012-13 was 3.77 which EXCEEDED the growth target for the state.
- WES was the 4th highest Western Wake School in growth



How to support your child's learning:

- Review your child's scores, available late Nov/early Dec.
- Talk with your child's teacher.
- Review the PTA's Common Core parent guides. (j.mp/ptaguides)
- Download tips for talking with your child (j.mp/tipsonscores)

Weatherstone Going Forward

- Academics
 - Current Intervention Services
 - Tier II, ESL, Special Programs, Intervention, Saturday School
 - STEM Program Enhancements
 - Staffing, Lessons, Programs
 - School Improvement Focused on Data
 - School Improvement Plan, Data in Professional Learning Communities
 - Resources
 - Technology
 - SMARTBoards (purchased 20 by the end of the year including all regular ed, special ed, and ART and Music Rooms)
 - Program Utilization and Effectiveness
 - Readers' Theater
 - Media Center Changes
 - Facilities
 - Carpets, Trailers, Painting



Weatherstone Going Forward

- Social and Emotional Growth
 - Clubs and Afterschool Activities
 - Math Olympiad
 - Science Olympiad
 - School Store
 - Safety Patrol
 - Morning News
 - Art Club
 - Running Club
 - Chorus
 - Early Release Day Activities focused on Character Education
 - Videos and Presentations
 - Grade Level and School Service Projects
 - School Counselor Monthly Lessons
 - Small groups lessons
 - Anti-Bully lesson
 - Internet Safety Lessons provided in Technology Special



Weatherstone Going Forward

- Physical Growth
 - Campus Enhancements
 - K-2 Playground
 - 3-5 Playground
 - Long Range Partnership between PTA, WES, and WCPSS
 - Fundraiser Partnership with PTA, Boosterthon focused on Good Character and Physical Activity
 - PE offered more often now (60 lessons vs. 45)

